

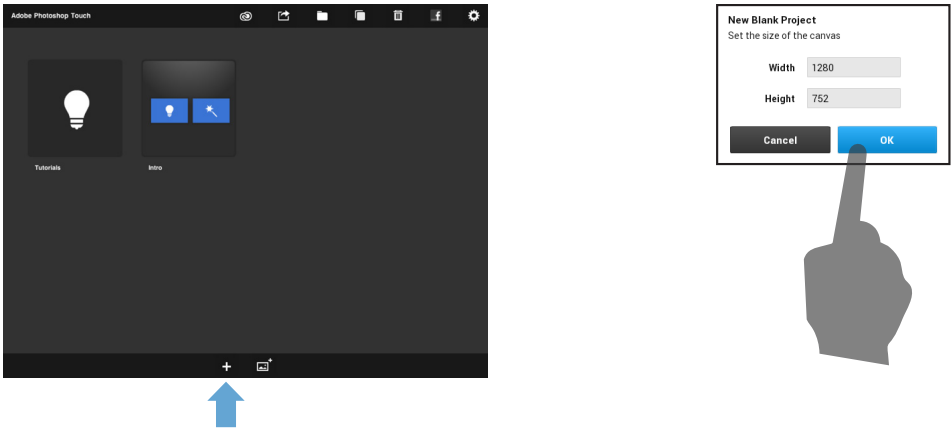


Photoshop Touch Quick Start Guide 1.3

Learn the fundamentals about Photoshop Touch to get started making a photo collage. To learn more about the Photoshop Touch features and tools, see the tutorials that are built into the app.

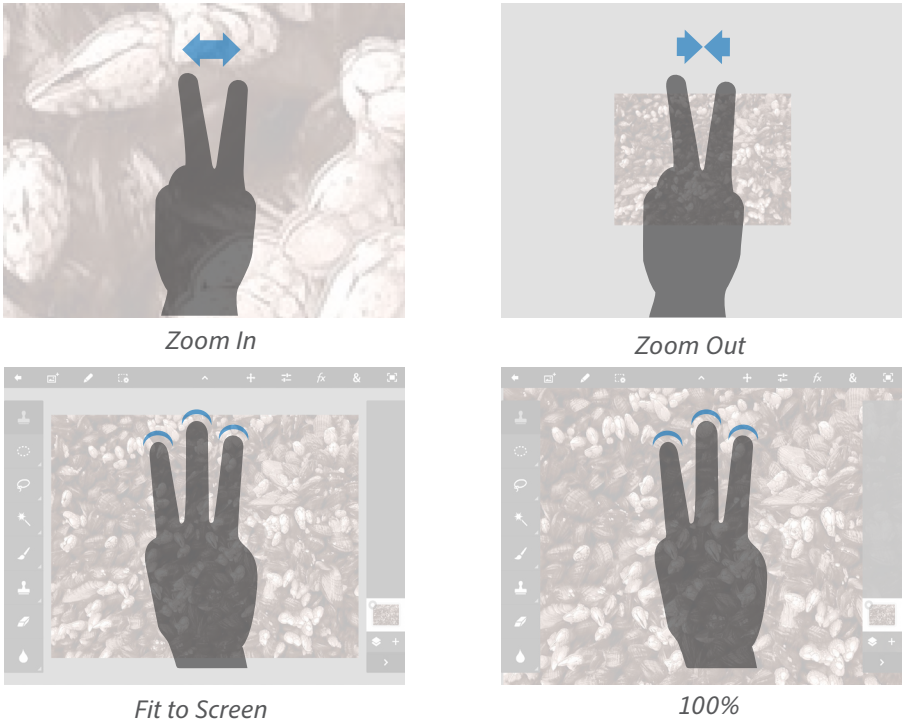
Start a New Project

Start a new project by tapping the “+” icon at the bottom of the opening screen. Enter the dimensions of your project, and tap OK.



Zoom in/out

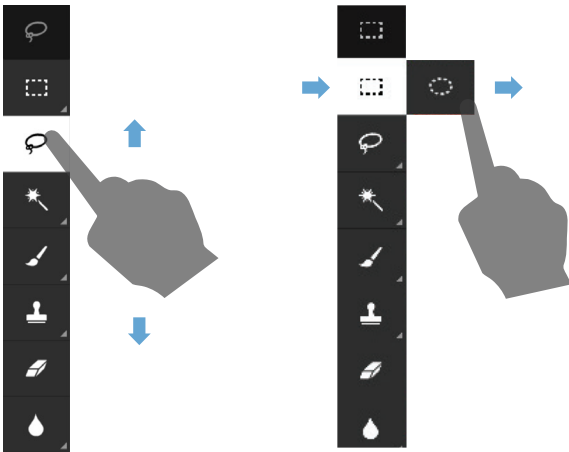
You can zoom in and out to view your image by placing two fingers on the screen. Pinch the fingers together to zoom out. Spread the fingers apart to zoom in.



With three fingers, you can toggle between fitting the image to screen, or viewing at 100%. Tap on the screen with three fingers.

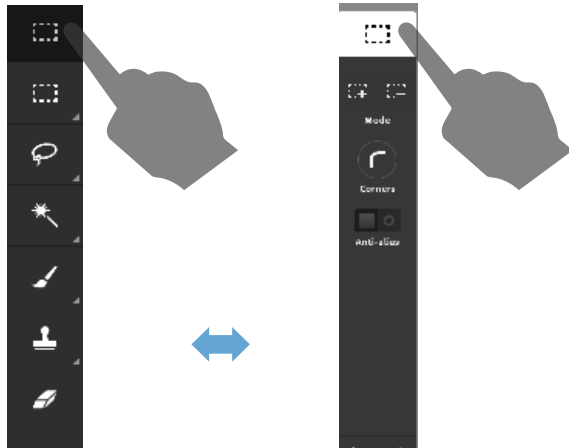
View all Tools

Drag your finger up and down along the toolbar to view and select tools. Drag and slide right to select nested tools.



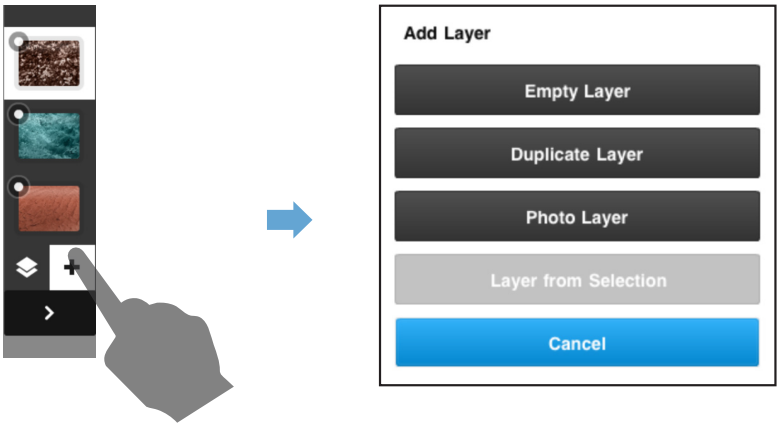
Toggle the Toolbar

Tap the top of the toolbar to toggle between the current tool and other tools.



Create a New Layer

Create a new layer, tap the “+” icon, then select the layer type.



Change a layers visibility

Tap the small circle on the layer thumbnail to hide it. Tap the circle again to show it.



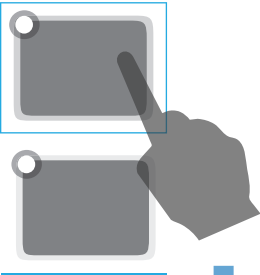
Not Visible



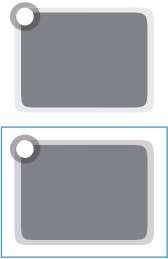
Visible

Change layer order

Layer thumbnails are stacked from top to bottom. To change layer order drag layer thumbnails up or down in the stack. A white box around the layer indicates the active layer.



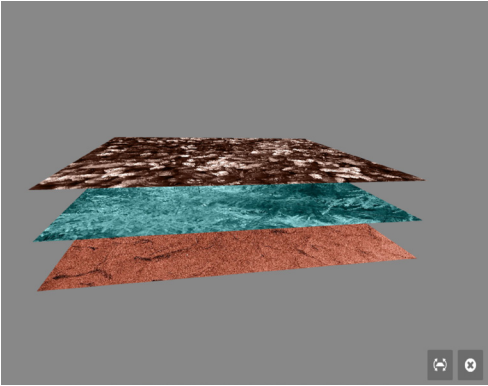
Before



After

View All Layers in 3D

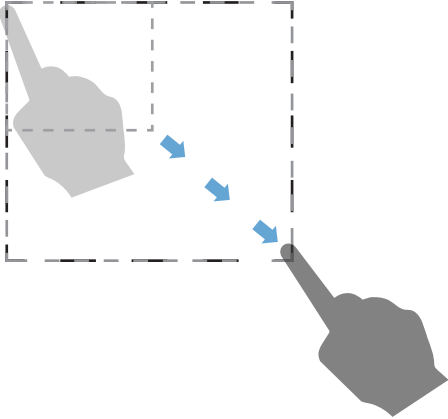
Double tap any layer for a 3D view. Pan the image to view the layers at different angles. Press the X to exit the 3D view.



Making a Selection

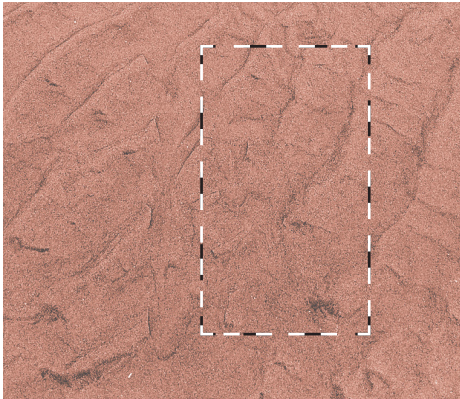
Drag a rectangle onto the image. The moving border indicates a selection. This is called a marquee selection.

When moving a selection, you are moving the selection area, **not** selected pixels. To move the pixels in a selected area, use the Transform tool.



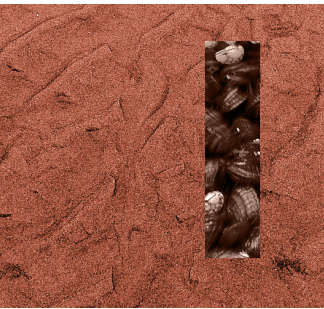
Deselecting

To deselect the area, tap once outside the selection or choose Select > Deselect.

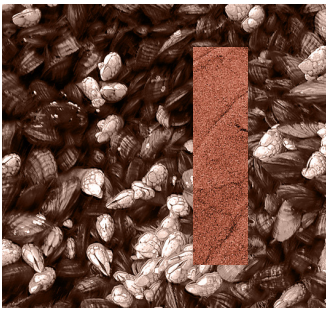


Extracting or Clearing a Selection

To remove the image outside of a selection, tap Edit > Extract. To remove the image inside of a selection, tap Edit > Clear.



Extract

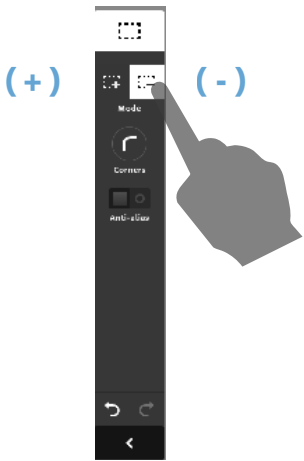
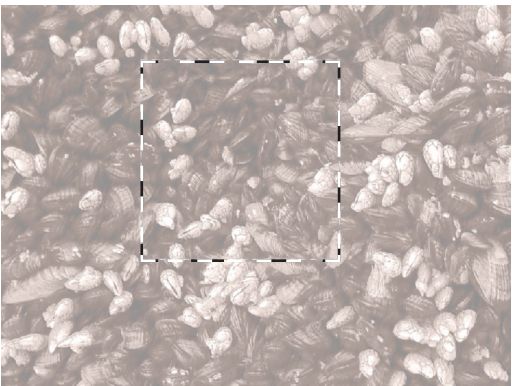


Clear

Adding To or Removing From a Selection

Create a rectangle selection. Tap the **Remove from Selection** button. Now select the area of the selection that you want to remove.

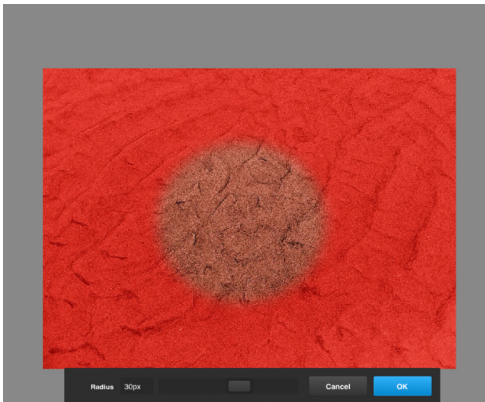
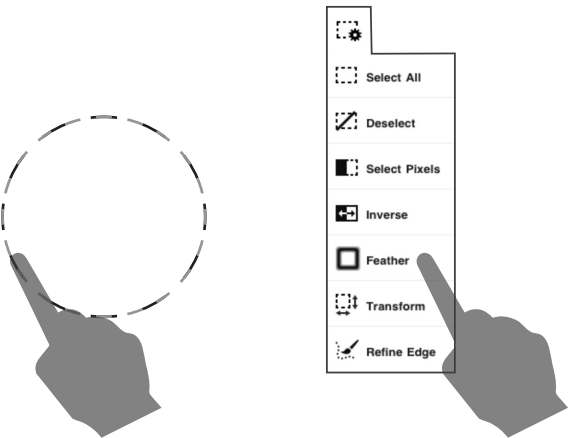
Tapping the Remove from Selection button allows you to remove areas from the current selection. Tapping the **Add to Selection** button allows you to add areas to the current selection. Tap either button to return to regular selection mode.



Feathering a Selection

To create a soft-edged selection, you will “feather” it. Create a selection, then tap Select > Feather.

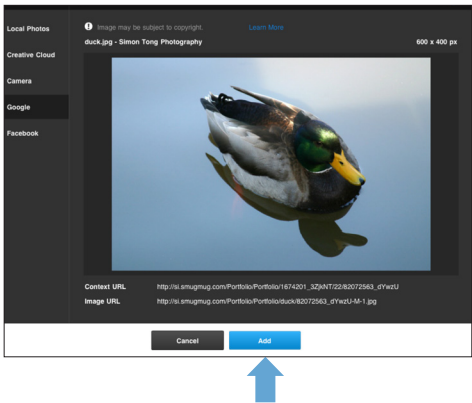
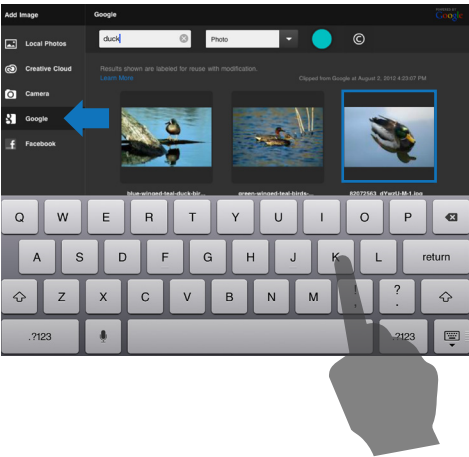
In the Feather dialog, move the slider left or right to affect the softness of the selection edge. Tap OK.



Add a Google Image Layer

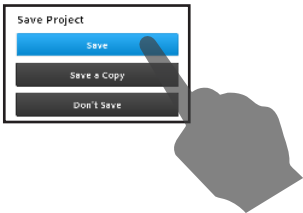
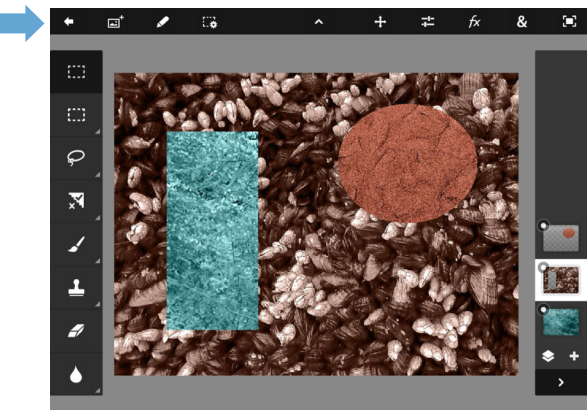
To add a photo layer, press the “+” in the layer bar, and select. Select “Photo Layer”.

Select Google and enter your search terms. Set a search color if desired. Choose your photo and tap Add to create the photo layer.



Save Project

To save a project, tap the back arrow at the top left of the menu bar. Tap Save. Your project will be visible on your Photoshop Touch home screen.



Share to Facebook

To share to Facebook, tap the share button in the top menu bar of the Photoshop Touch home screen. Select the image or images to share to Facebook and tap OK.

